

# SLP-TX400

4 inch Thermal Transfer  
Desktop Label Printer



Retail



Warehouse



Healthcare



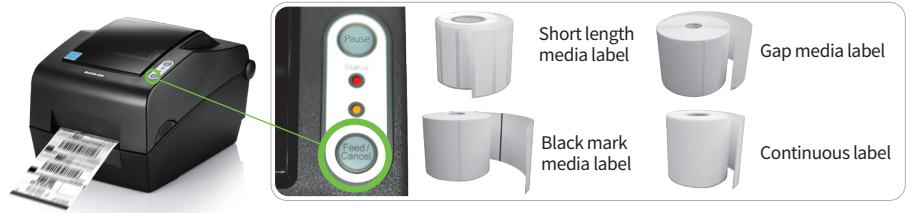
Post &  
Parcel

# Smart and Premium



### Outstanding Competibility

- Fully compatible with market-leading programming languages
- Reliable wireless connectivity with Smart Mobile Devices
- Support all major operating systems including Android™, iOS™ and Windows®



### Premium-Level Performance

- Fast Data Processing and Printing Speed up to 7 ips (178 mm/sec)
- Smart Media Detection™ : Automatic paper sensing
- All in one Plus™ Interface
  - ① USB + Serial + Parallel
  - ② USB + Serial + Ethernet + USB Host
- Optional WLAN(802.11a/b/g/n/ac) or Bluetooth Dongle supported via a USB Host Port

### User-Friendly Design

- Wide range of ribbon roll length from 74m to 300m
- Easy paper loading with adjustable paper guide
- Pause and cancel function-keys



# SLP-TX400

## 4 inch Thermal Transfer Desktop Label Printer

### Specifications

#### Printer Specifications

**Print Method**

Thermal Transfer, Direct Thermal

**Print Speed**

SLP-TX400: Up to 7 ips (178 mm/sec)  
SLP-TX403: Up to 5 ips (127 mm/sec)

**Print Resolution**

SLP-TX400: 203 dpi  
SLP-TX403: 300 dpi

**Print Width**

SLP-TX400: Up to 108 mm  
SLP-TX403: Up to 105.7 mm

**Print Length**

Up to 1,000 mm

**Sensor**

Transmissive, Reflective (Adjustable),  
Ribbon-End, Head Open

#### Media Characteristics

**Media Type**

Gap, Black Mark, Notch, Continuous, Fan-Fold

**Media Width**

25 ~ 112 mm

**Media Roll Diameter**

Up to 130 mm

**Media Thickness**

0.06 ~ 0.20 mm

**Supply Method**

Easy Paper Loading

**Inner Core**

25.4 ~ 38.1mm

#### Ribbon Characteristics

**Ribbon Type**

Wax, Wax/Resin, Resin, Outside

**Ribbon Width**

33 ~ 110 mm

**Ribbon Length**

Up to 300 m

**Core Inner Diameter**

25.4 mm, 12.7 mm

#### Physical Characteristics

**Dimensions (W x D x H)**

214 x 310 x 195 mm  
(8.42 x 12.20 x 7.67 inch)

**Weight**

2.85 kg (6.28 lbs.)

**Electrical**

EnergyStar Certified,  
External Power Adaptor 100-240 V AC, 50/60 Hz

#### Performance Characteristics

**Memory**

64 MB SDRAM, 128 MB Flash

**Interface**

- ① USB + Serial + Parallel
- ② USB + Serial + Ethernet + USB Host

\* Compatible with WLAN(802.11a/b/g/n/ac) or  
Bluetooth Dongle via a USB Host Port

**Real Time Clock**

Supported (Optional)

#### Environment Characteristics

**Temperature**

Operating: 5 ~ 40 °C (41 ~ 104 °F)  
Storage: -20 ~ 60 °C (-4 ~ 140 °F)

**Humidity**

Operating: 10 ~ 80 % RH  
Storage: 10 ~ 90 % RH

#### Software

**Emulation**

SLCS™, BPL-Z™, BPL-E™, BPL-D™ (Optional)

**Driver / Utility**

Windows Driver (Europlus / Seagull),  
Linux / Mac CUPS Driver,  
Virtual COM USB / Ethernet Driver,  
Utility Program, OPOS / JPOS Driver,  
Bartender Ultralite for BIXOLON,  
Device Driver for SAP®, Network Auto Installer

**Developer Tools**

Android / iOS / Windows SDK, Linux SDK,  
Chrome SDK, Xamarin SDK, Web Print SDK

**Design & Print**

Label Artist-II™,  
Label Artist™ Mobile (Android, iOS),  
mPrint App (Android, iOS)

**MDM**

SOTI Connect supported

#### Fonts / Graphics / Symbologies

**Fonts**

Bitmap Fonts (10 SLCS™, 16 BPL-Z™, 5 BPL-E™),  
Scalable Fonts (1 SLCS™, 1 BPL-Z™),  
23 Code page,  
Unicode supported (UTF-8, UTF-16LE, UTF-16BE)

**Graphics**

Supporting user-defined fonts, graphics,  
formats and logos

**Barcode Symbologies**

1D: Codabar, Code 11, Code 39, Code 93,  
Code 128, EAN-13, EAN-8, Industrial 2-of-5,  
Interleaved 2-of-5, Logmars, MSI, Plessey,  
Postnet, GS1 DataBar (RSS-14),  
Standard 2-of-5, UPC/EAN extensions,  
UPC-A, UPC-E, IMB  
2D: Aztec, Codablock, Code 49, Data Matrix,  
MaxiCode, MicroPDF417, PDF417, QR code,  
TLC 39

#### Accessories

**Options**

Peeler, Auto Cutter, External Paper Supply,  
WLAN Dongle (Consensus required),  
Serial cable, Parallel cable, USB cable

#### Supplies

B-ribbon™, B-band™